

2944

FREELANCER





2944 MISC FREELANCER

Life is a **challenge**.

From the unforgiving abyss of space to the harsh conditions of atmospheric flight, your ship will have to suffer the extremes and everything in between. Couple that with the responsibility of transporting someone else's property — you need a ship that's dependable, enduring and capable of handling all of the obstacles that life can throw at you.

Challenge **accepted**.

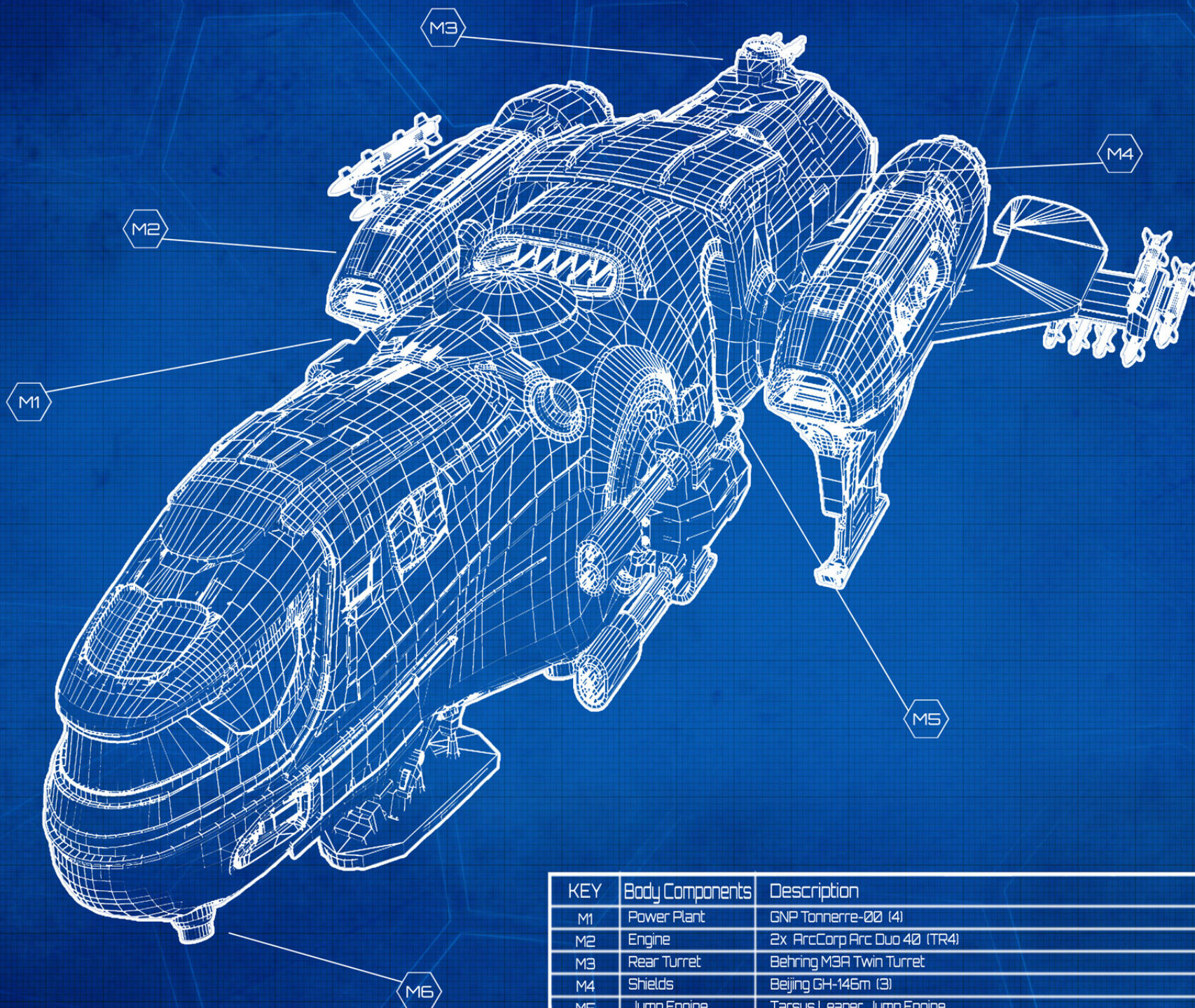
ADVANCEMENT PERFECTED

"We are pleased to reveal the 2944 Freelancer. MISC continues its dedication to refining the best mid-sized commercial transport vessel on the market while offering the versatility to outfit the ship for exploration or even combat. Our engineers have collected raw data from our loyal customers to understand exactly what they want in the new Freelancer. You will find that our engines have achieved the peak efficiency for their size, class and model."

Lyr To-Ko

*Chief AstroEngineer, MISC
Shorvu, Rihlah, Xi'An Empire*





KEY	Body Components	Description
M1	Power Plant	GNP Tonnerre-00 (4)
M2	Engine	2x ArcCorp Arc Duo 40 (TR4)
M3	Rear Turret	Behring M3A Twin Turret
M4	Shields	Beijing GH-145m (3)
M5	Jump Engine	Tarsus Leaper Jump Engine
M6	Thrusters	8x MISC XITech (TR2)

DETAILED
MISC Freelancer

DISCLAIMER: These are our current specifications on paper. Some of this is likely to change during the 3D design and game balancing process over the next 24 months.

Sheet
DET-1

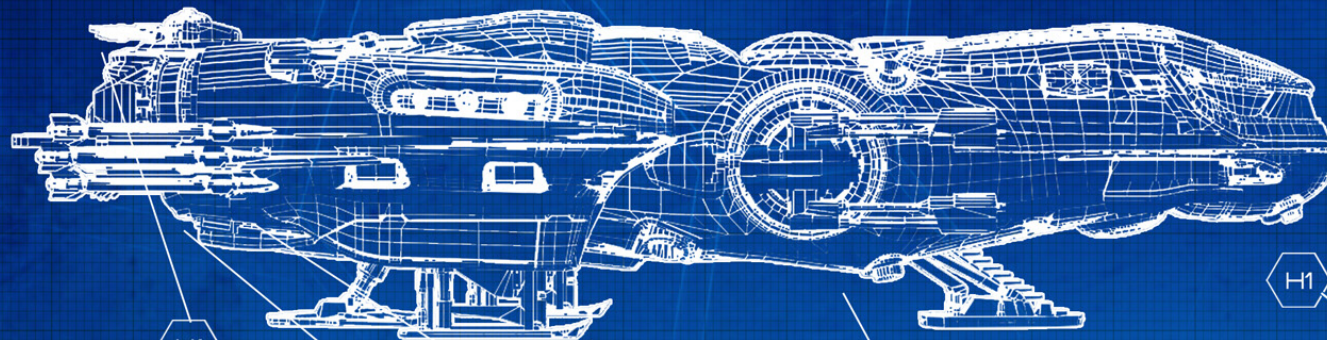


Cloud Imperium Games Corporation
<http://www.robertsspaceindustries.com>

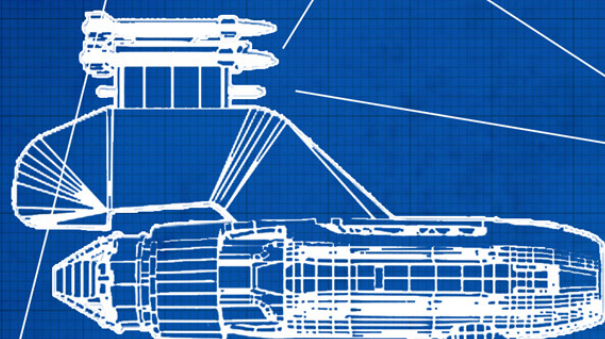
NO.	REVISIONS	DATE BY

DRAWN BY: RR	CHECKED BY: DL
	NB Logic

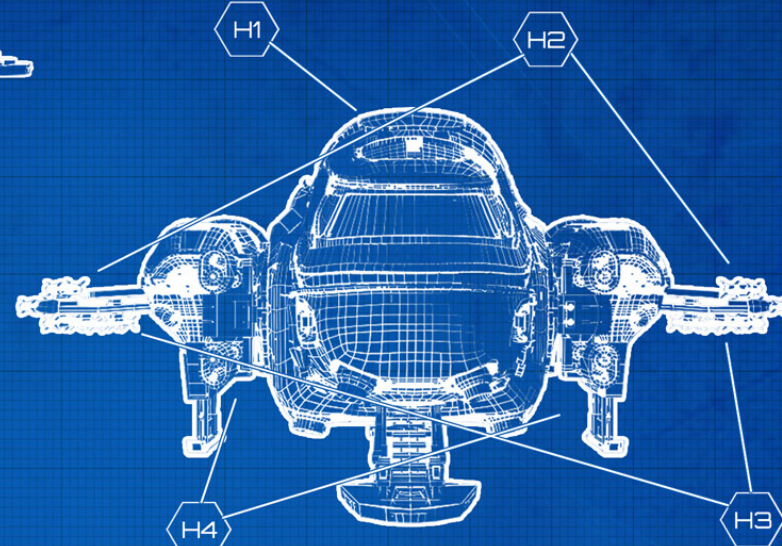
BUILDER:	MISC
----------	------



FREELANCER
SIDE VIEW



FREELANCER
TOP VIEW



FREELANCER
FRONT VIEW

KEY	CLASS	HARDPOINTS
H1	1x CLASS 5	Behring M3A Twin Turret
H2	2x CLASS 3	3 Behring Marksman III
H3	2x CLASS 3	3 Behring Executioner II
H4	2x CLASS 4	2 Behring V82-FL Laser Cannon

NOTES:

On the OUR, cargo capacity is replaced with a larger fuel tank, and a Nav-E7 Long Range Scanner is added, instead of the turreted M3A. The MAX also has no turreted cannon, but has 65% greeter cargo capacity. The MIS has all the weapons of the standard model, plus two topside dual launchers with slots for 24 additional Size 2 missiles.

BUILDER:
MISC

NO. REVISIONS DATE BY

DRAWN BY: RR
CHECKED BY: DL
NB Logic



Cloud Imperium Games Corporation
<http://www.robertsspaceindustries.com>

HARDPOINTS
MISC Freelancer

DISCLAIMER: These are our current specifications on paper. Some of this is likely to change during the 3D design and game balancing process over the next 24 months.

Sheet
HP-1



Freelancer engineers take as much care constructing the inside of the ship as the outside.

All models are designed to maximize operator efficiency without cramping your space.



CONTROL. HOW YOU NEED IT.

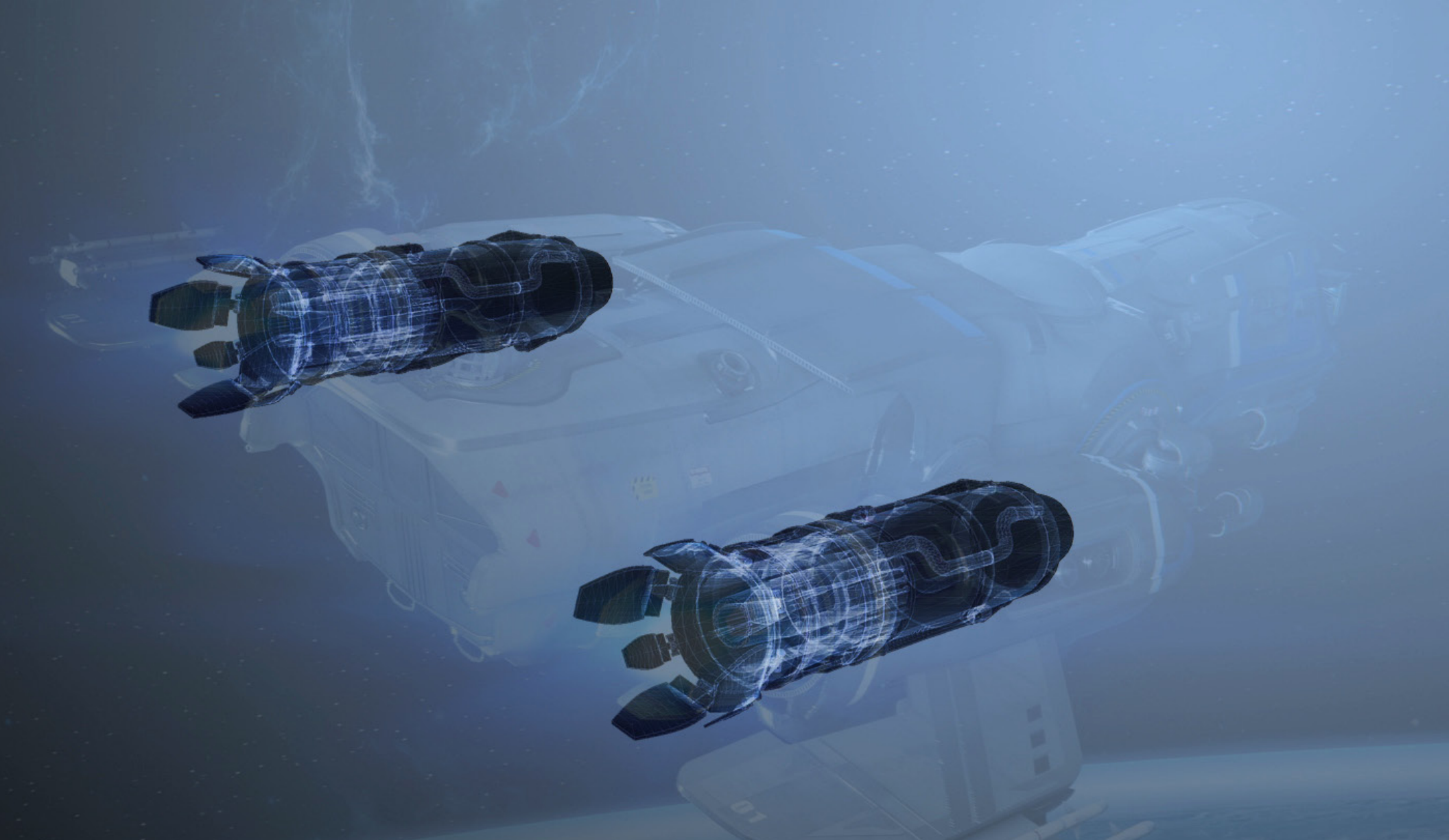
All Freelancer models come standard with MISC's XTENSION flight control system, featuring contoured hand-grips for maximum comfort and precision control, all without compromising visibility to your critical ship data.

YOUR DATA. YOUR WAY.

MISC continues to push the limits of interface technology when it comes to interacting with your ship. The Freelancer utilizes Fovea technology to offer unparalleled clarity for your displays, so you won't miss a strand of data.

FUNCTION HAS A STYLE OF ITS OWN.





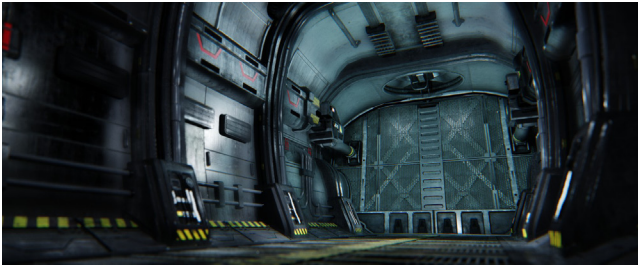
WHITLEY™-RATED EFFICIENCY

MISC searched far and wide for the perfect engine system to complement the new generation of Freelancer. The new 400 series from Arc Duo features Electrospray Colloid Ion technology, which uses electrostatic acceleration of charged droplets to generate thrust, offering maximum efficiency while emitting a minimal signature. With the 2944 line, these engines will come coupled with MISC's tried-and-true ATK distributor system, giving you more insight on exactly how to distribute your power.



To many, precise maneuvering in a hauling ship feels like a lost cause, but the engineers at MISC take it very seriously. With the 2944 Freelancer, our astroengineers have completely stripped down the Corolix thrusters, the industry standard in previous years, to rebuild it from the ground up. The results offered only a minimal increase in effectiveness and efficiency. That wasn't good enough, so we turned to the Xi'An Empire and worked with our associates there to approach the question from a different angle, incorporating their advancements in thrust/draw conditioning and even their aesthetics, to create something completely new that once more pushes the boundaries of what can be done with a commercial vessel.

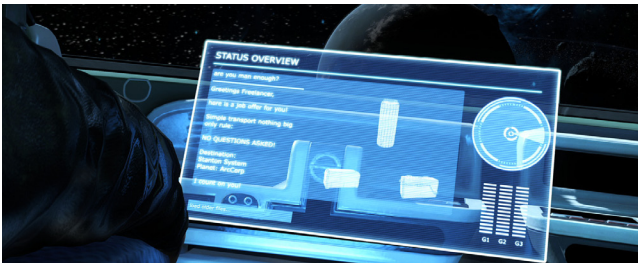
Introducing the MISC XiTech series.



Anyone who's ever lived the Life will tell you that a packed cargo hold is a whole lot more than a pressurized room filled with crates. A full hold is a job. A full hold is security. A full hold is proof that you're trusted. A full hold is everything.

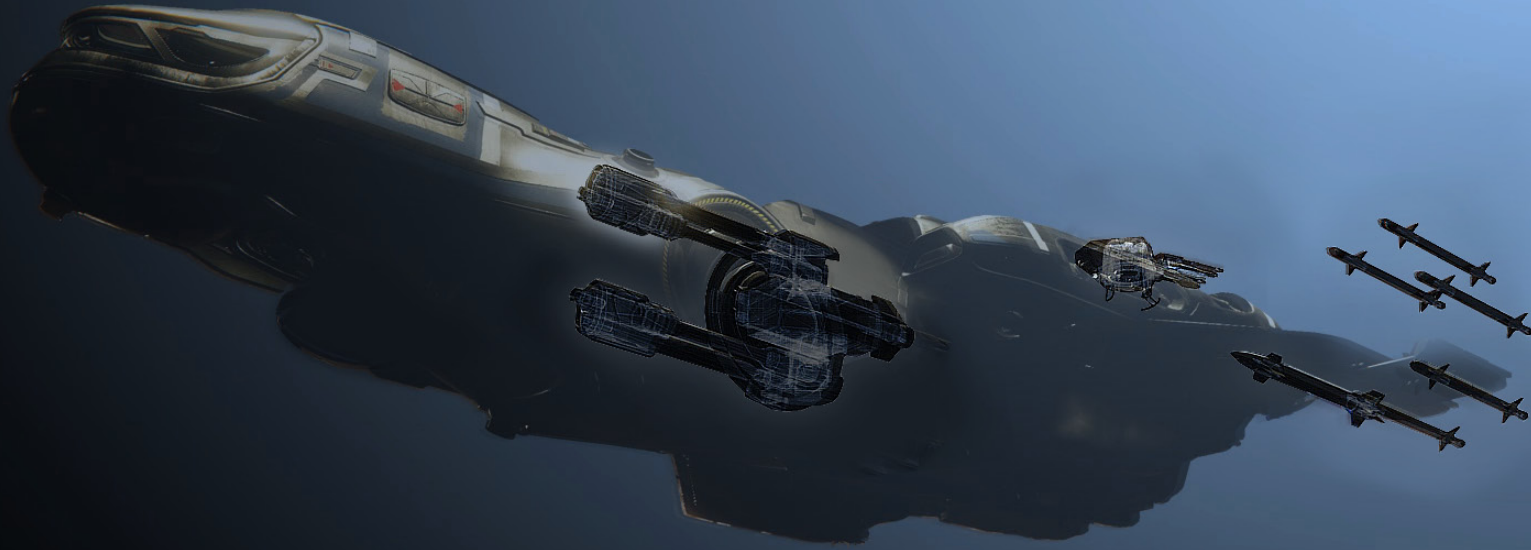
Freelancer's cargo hold features Galvanized SafeGrates shock-resistant plates to keep your cargo protected and plenty of storage capacity to maximize every trip.

Take a step inside the Freelancer cargo space to see for yourself. The hold can be whatever you need it to be because an empty hold can be everything too.

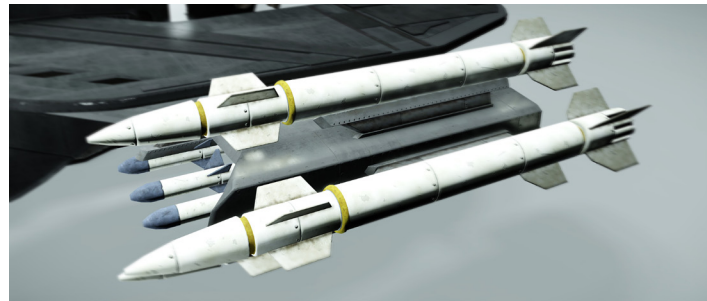


For the honest hauler and anyone else, cargo means profit. While your cargo represents an honest day's work, a contract binding you and your client and your reputation, there are times where you need to take a stand.

MISC went to some of the most trusted and effective names in the weapon business, names like Behring, Kroneg and Talon, to build a comprehensive weapons package that will give you the confidence to defend that contract, and your reputation, with conviction.



- ⚡ Protect your blind spots with an operator-controlled turret.
- ⚡ B&R Cordival Operator Turret offers wide visibility and responsive positioning.
- ⚡ Fitted with two Behring V82-FL laser cannon, these custom models were designed exclusively for MISC.



- ⚡ MISC's proprietary QuikDeploy.Array offers a clean ordnance launch, every time.
- ⚡ Two mounts on each side, one capable of holding Size 2 and the other Size 3 missiles.
- ⚡ Marksman II and Marksman III missiles pictured (check availability with dealer when purchasing).



- ⚡ Intuitive Weapon Control System allows you to track and engage enemies with a powerful and sustained stream of fire.
- ⚡ B&R Model P C2 Turret System offers precision turning with 270x135 fire arc.
- ⚡ Linked Kroneg FL33's are combat-tested battlefield equalizers.

WHAT'S BETTER THAN ONE OF THE MOST DEPENDABLE AND VERSATILE MID-SIZED COMMERCIAL VESSELS IN THE UEE? Three more of them.

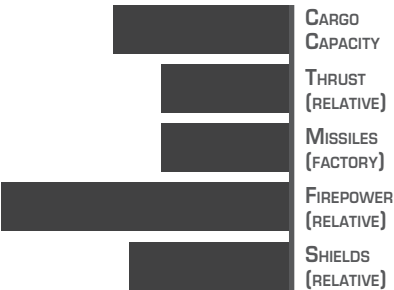
MISC engineers have spent the past year researching the most common Freelancer customizations, investigating exactly how owners are using their ships. They took that knowledge and expanded the Freelancer line to make our ship, your ship, exactly right for you, right off the lot.

Whether you're looking to maximize your hauling potential, push to the furthest reaches of known space or establish a presence on the battlefield, MISC has a Freelancer for you.



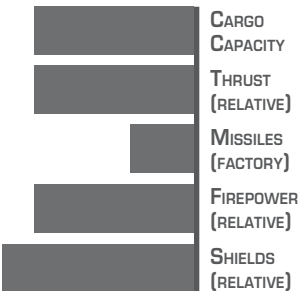
FREELANCER

Freelancers are commonly used as long haul merchant ships by major corporations, but they are just as frequently repurposed as dedicated exploration vessels by independent captains who want to operate on the fringes of the galaxy.



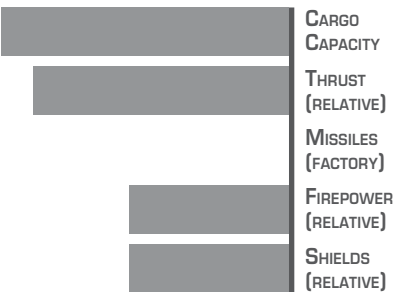
FREELANCER DUR

Sacrificing 25% of the cargo capacity of the standard Freelancer for an enhanced scanner and an expanded fuel tank may seem like a bad call to some, but those who value discovery over profit will find the DUR to be their ship of choice.



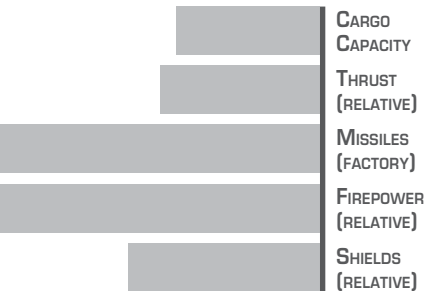
FREELANCER MAX

The Freelancer MAX has additional cargo capacity at the expense of weapons, making it ideal for the transport of equipment, raw materials and other bulky but profitable goods.



FREELANCER MIS

The Freelancer MIS is a limited edition militarized variant of the classic mercantile ship developed by the UEE. This version sacrifices the majority of its cargo capacity to make way for missiles.



FREELANCER

Why mess with perfection? Boasting unrivaled dependability and customization options, MISC's FREELANCER is the go-to ship for both independent haulers and large Corps dealing in smaller jobs. While the Freelancer offers customizable options to suit your needs, right off the lot you have a capable workhorse at your disposal, featuring a Tarsus jump drive, a comprehensive weapon and defensive package and a pair of power ArcDuo engines all at your beck and call. Standard.



SPECIFICATIONS

ROLE	Mercantile
LENGTH (M)	32.00
BEAM (M)	15.00
HEIGHT (M)	8.00
MASS (KG)	26,065
CARGO CAPACITY	168
MAX CREW	2
MAX POWER PLANT	5
FACTORY PLANT	GNP Tonnerre-00 (4)
MAX ENGINE	2x TR5
FACTORY ENGINE	2x ArcCorp Arc Duo 400 (TR4)
THRUSTERS	8x TR2
FACTORY THRUSTERS	8x MISC XiTech (TR2)
MAX SHIELD	5
FACTORY SHIELD	Beijing GH-146m (3)

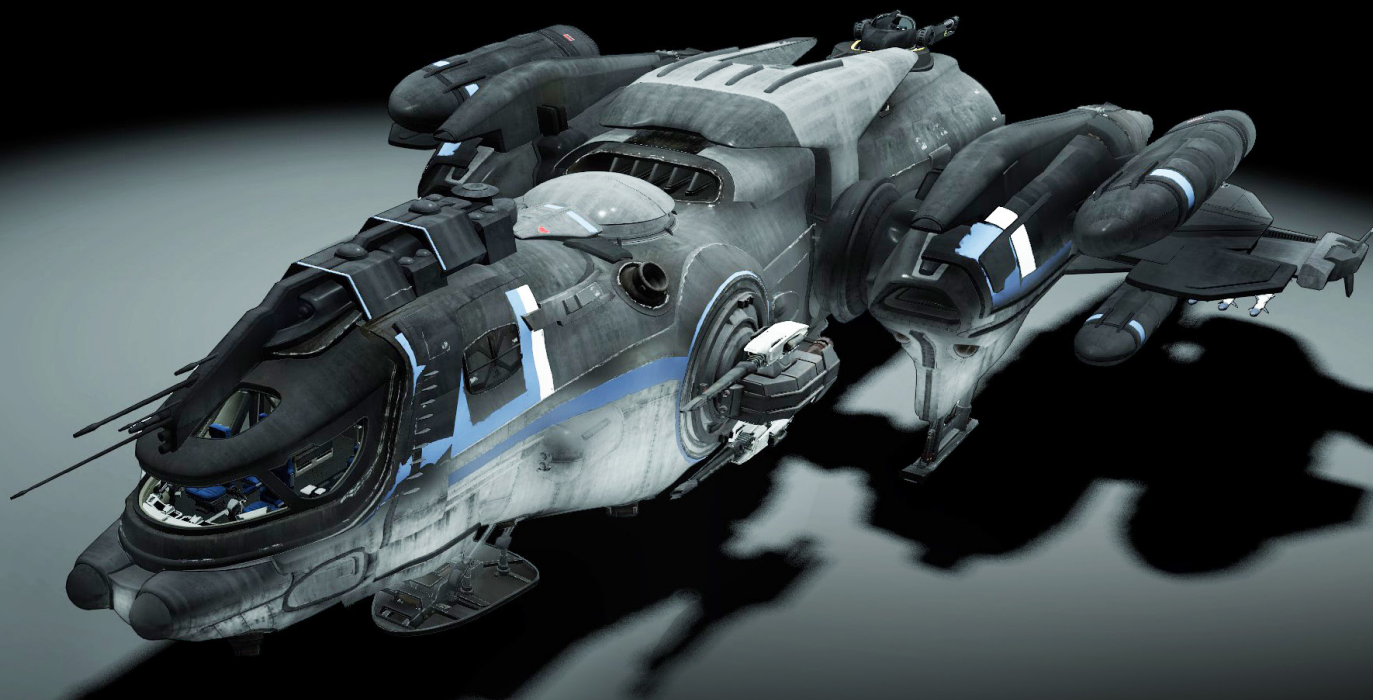
LOADOUT & ADDITIONAL EQUIPMENT

WINGTIPS	2x Class 3: 3x Size 3 Behring ASIM-09/c Marksman III
UNDERWING	2x Class 3: 3x Size 2 Behring ASIM-09/c Marksman II
WAIST	2x Class 4: 2 Kroneg FL33 (1 equipped each side)
REAR TURRET	Class 5: Behring V82-FL Twin Turret Laser Cannon
EQUIPMENT	Tarsus Leaper Jump Engine



FREELANCER DUR

If you're looking for the edge, for that yawning dark of the unknown or the thrill of discovery, the Freelancer DUR is the only ship you want to take you there. Outfitted specifically for deep space exploration, life on the drift has never been so comfortable. Packing an enhanced jump drive from Tarsus, a NAV-E7 Long Range Scanner and expanded fuel tanks, the DUR is designed to keep you going longer and further.



SPECIFICATIONS

ROLE	Exploration
LENGTH (M)	34.00
BEAM (M)	19.00
HEIGHT (M)	8.00
MASS (KG)	32,825
CARGO CAPACITY	148
MAX CREW	2
MAX POWER PLANT	5
FACTORY PLANT	GNP Super Tonnerre-00 (4)
MAX ENGINE	2x TR5
FACTORY ENGINE	2x ArcCorp Arc Duo 400 (TR4)
THRUSTERS	8x TR2
FACTORY THRUSTERS	8x MISC XiTech (TR2)
MAX SHIELD	5
FACTORY SHIELD	Gorgon Invincible X (3)

LOADOUT & ADDITIONAL EQUIPMENT

WINGTIPS	2x Class 3: 3x Size 3 (none equipped)
UNDERWING	2x Class 3: 3x Size 2 Behring ASIM-09/c Marksman II
WAIST	2x Class 4: 2 Kroneg FL33
REAR TURRET	Class 5: (none equipped)
EQUIPMENT	Tarsus Leaper Pro Jump Engine Nav-E7 Long Range Scanner Nav-E7 Expanded Fuel Tanks



FREELANCER MAX

If you're making so many runs that your regular Freelancer just isn't cutting it, you need to upgrade to the ultimate in cargo hauling. MAX. It's the only way to describe this model. It's not a name ascribed lightly, the Freelancer MAX offers a wider body, adding fifty percent more cargo capacity than the base model. That's almost a quarter of the capacity of the MAX's big brother, the Starfarer, which means more profit per run.



SPECIFICATIONS

ROLE	Militia
LENGTH (M)	32.00
BEAM (M)	15.00
HEIGHT (M)	8.00
MASS (KG)	26,065
CARGO CAPACITY	280
MAX CREW	2
MAX POWER PLANT	6
FACTORY PLANT	GNP Tonnerre-00 (4)
MAX ENGINE	4x TR5
FACTORY ENGINE	2x ArcCorp Arc Duo 400 (TR4)
THRUSTERS	8x TR2
FACTORY THRUSTERS	8x MISC XiTech (TR2)
MAX SHIELD	4
FACTORY SHIELD	Beijing GH-146m (3)

LOADOUT & ADDITIONAL EQUIPMENT

UNDERWING	2x Class 3: 3x Size 2 (none equipped)
WAIST	2x Class 4: 2 Kroneg FL33 (1 equipped each side)
REAR TURRET	Class 5: (none equipped)
EQUIPMENT	Tarsus Leaper Jump Engine



FREELANCER MIS

A limited-edition model of the Freelancer built as a heavy weapon platform, the Freelancer MIS is ideal for independent security contractors as well as small local militia, law enforcement, or anyone who requires a formidable deterrent or some heavy-duty backup. This MIS version trades in the original Freelancer's massive cargo capacity for an automated missile storage and reloading system, making the MIS capable of delivering a devastating and sustained deployment of ordnance.



SPECIFICATIONS

ROLE	Militia
LENGTH (M)	34.00
BEAM (M)	15.00
HEIGHT (M)	8.00
MASS (KG)	27,495
CARGO CAPACITY	132
MAX CREW	3
MAX POWER PLANT	5
FACTORY PLANT	GNP Super Tonnerre-00 (4)
MAX ENGINE	2x TR5
FACTORY ENGINE	2x ArcCorp Arc Duo 400 (TR4)
THRUSTERS	8x TR2
FACTORY THRUSTERS	8x MISC XiTech (TR2)
MAX SHIELD	5
FACTORY SHIELD	Gorgon Invincible X (3)

LOADOUT & ADDITIONAL EQUIPMENT

WINGTIPS	2x Class 3: 3x Size 3 Behring ASIM-09/c Marksman III
UNDERWING	2x Class 3: 3x Size 2 Behring Executioner II
TOP LAUNCHER	2x Class 3: 2x Size 2 Behring ASIM-09/c Marksman II
WAIST	2x Class 4: 2 Kroneg FL33 (1 equipped each side)
REAR TURRET	Class 5: Behring V82-FL Twin Turret Laser Cannon
EQUIPMENT	Tarsus Leaper Jump Engine Behring Express Missile Replenisher with reload packs 20 additional Size 2 missiles in hold, 10 on each side. (Can be upgraded with two more 10-missile racks interior, bringing total potential missile capacity up to 50 size 2 and 6 size 3 missiles.)



FREELANCER SPECIFICATIONS

The easy part – deciding to upgrade to the 2944 Freelancer.

The hard part – deciding which one to get.

The Freelancer has what it takes to get the job done. No question.

Here are a few considerations that may make selecting the right model for you a little easier.

FLEXIBILITY. Are you constantly amazed by the new opportunities that keep knocking on your door? Do you ship computer parts one week and fresh fruit the next? Then you'll be wanting the flexibility that the MISC Freelancer standard model offers.

RANGE. Are your long hauls redefining the meaning of long? Do Journeymen get jealous when they hear of everywhere you've been? You may want to consider the extra distance that the Freelancer DUR can provide.

SPACE. Are you a firm believer that size does matter? Do you make sure that every cubic meter of space is earning you credits? Then it sounds like the extra capacity of the Freelancer MAX may be right for you.

PROTECTION. Are you the one who takes the jobs no one else is willing to do? Do you earn the trust of your clients by delivering their cargo no matter what stands in your way? Then the extra firepower of the Freelancer MIS may be what you've been looking for.

STRUCTURE

	FREELANCER	FREELANCER DUR	FREELANCER MAX	FREELANCER MIS
Role	Mercantile	Exploration	Transport	Militia
Length (m)	32.00	34.00	32.00	34.00
Beam (m)	15.00	19.00	15.00	15.00
Height (m)	8.00	8.00	8.00	8.00
Mass (kg)	26,065	32,825	26,065	27,495
Cargo Capacity	168	148	280	132
Max Crew	2	2	2	3
Max Power Plant	5	5	6	5
Factory Plant	GNP Tonnerre-00 (4)	GNP Super Tonnerre-00 (4)	GNP Tonnerre-00 (4)	GNP Super Tonnerre-00 (4)
Max Engine	2x TR5	2x TR5	4x TR5	2x TR5
Factory Engine	2x ArcCorp Arc Duo 400 (TR4)	2x ArcCorp Arc Duo 400 (TR4)	2x ArcCorp Arc Duo 400 (TR4)	2x ArcCorp Arc Duo 400 (TR4)
Thrusters	8x TR2	8x TR2	8x TR2	8x TR2
Factory Thrusters	8x MISC XiTech (TR2)	8x MISC XiTech (TR2)	8x MISC XiTech (TR2)	8x MISC XiTech (TR2)
Max Shield	5	5	4	5
Factory Shield	Beijing GH-146m (3)	Gorgon Invincible X (3)	Beijing GH-146m (3)	Gorgon Invincible X (3)

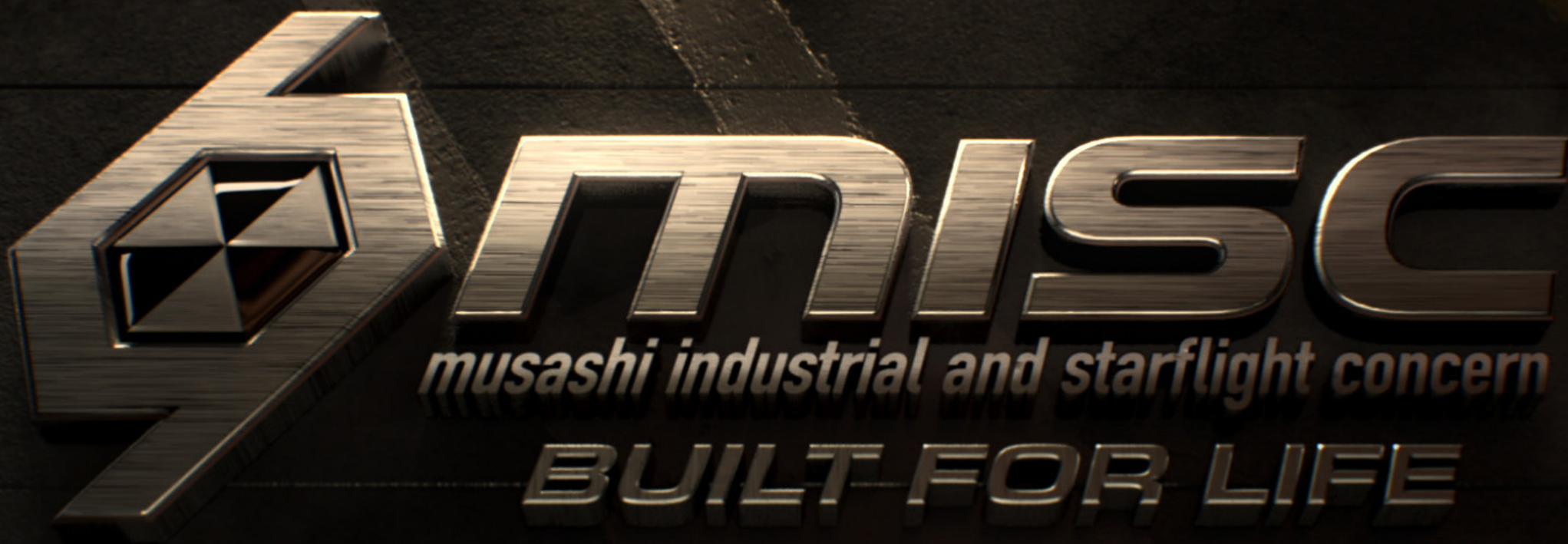
HARDPOINTS & OTHER EQUIPMENT

Wingtips *	2x Class 3: 3x Size 3 Behring Marksman III	2x Class 3: 3x Size 3 (none equipped)		2x Class 3: 3x Size 3 Talon ASIM-20/c Stalker III
Underwing *	2x Class 3: 3x Size 2 Behring Executioner II	2x Class 3: 3x Size 2 Behring Executioner II	2x Class 3: 3x Size 2 (none equipped)	2x Class 3: 3x Size 2 Behring Executioner II
Topside Launcher	(not factory equipment)	(not factory equipment)	(not factory equipment)	2x Class 3: 2x Size 2 Behring Marksman II
Waist	2x Class 4: 2 Kroneg FL33 (1 equipped)	2x Class 4: 2 Kroneg FL33	2x Class 4: 2 Kroneg FL33 (1 equipped)	2x Class 4: 2 Kroneg FL33 (1 equipped)
Rear Turret	Class 5: Behring V82-FL Twin Turret Laser Cannon	Class 5: (none equipped)	Class 5: (none equipped)	Class 5: Behring V82-FL Twin Turret Laser Cannon
Equipment	Tarsus Leaper Jump Engine	Tarsus Leaper Pro Jump Engine Nav-E7 Long Range Scanner Nav-E7 Expanded Fuel Tank	Tarsus Leaper Jump Engine	Tarsus Leaper Jump Engine Behring Express Missile Replenisher with reload packs 20 additional Size 2 missiles in hold, 10 on each side. (Can be upgraded with two more 10-missile racks interior, bringing total potential missile capacity up to 50 size 2 and 6 size 3 missiles.)

* The models and options included in this brochure are accurate at time of publication. (A recent update is that the wingtips can now mount three Size 3 missiles and the Underwing hardpoint can mount three Size 2 missiles.) MISC reserves the right to make changes at any time, without notice, to colors, equipment, specifications and availability.



YOUR CARGO'S NOT THE ONLY THING THAT'LL ARRIVE LOOKING GOOD.



©2944 Musashi Industrial and Starflight Concern.

All logos, imagery, text and designs are protected and registered trademarks of MISC and its affiliates. Whitley's and its logo are registered trademarks of Farnes Media, LLC. Used with permission.

All technical information and data were performed during controlled testing and are considered accurate at time of publication. Some images may show optional equipment, please consult your local dealer for your model's loadout.

MUSASHI INDUSTRIAL and STARFLIGHT CONCERN
Marketing Dept.
1611 Terashi Square Bldg 6728c
Fujin City, Saisei, Centauri

Xi'An Registry:
ExtraEmp Division: MISC
Rihlah/Shorvu